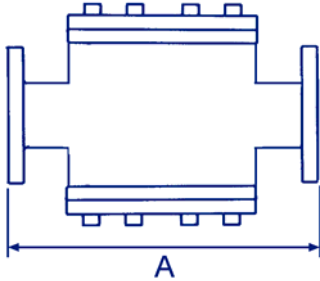


LEVEL & SIGHT INDICATORS



AI



RHODES SIGHT GLASS

Part No AI

VARIOUS BODY MATERIALS WITH FLANGED CONNECTIONS

SIZE	DN25	DN40	DN50	DN65	DN80	DN100	DN150	DN200
A (NON LINED)	229	229	279	279	343	425	406	464
A (GLASS LINED)	231	231	281	281	345	427	408	466
A (RUBBER LINED)	233	233	283	283	347	429	410	468
VIEWING DIAMETER	60	70	89	89	120	152	152	210

The AI is a simple, robust sight glass, having a good quality cast body recessed to hold toughened glass windows on two sides. The glasses are held in place by steel covers and high tensile bolts. Joint rings made in a suitable material, fit into the same recess as the glass windows and consequently cannot be blown out by excessive pressure.

Features & Benefits

- Highest quality product design & manufacture.
- Cast iron, stainless steel & carbon steel bodies.
- Suitable for many applications.
- Drilled to your specifications.

Pressure & Temperature

Pressure range:-

DN25 - DN65	20 Bar
DN80	18 Bar
DN100 - DN150	16 Bar
DN200	14 Bar

Temperature Range:-

Cast Iron	200°C.
Cast Iron, Glass Lined	200°C.
Cast Iron, Rubber Lined	70°C.
Carbon Steel	250°C.
Stainless Steel	250°C.

MATERIALS	
Body	Cast Iron, Carbon Steel & Stainless Steel
Cover Rings	Mild Steel
Window (Bronze Body)	Toughened Soda Lime Glass
Gaskets	NRG or PTFE
Fasteners	Mild Steel